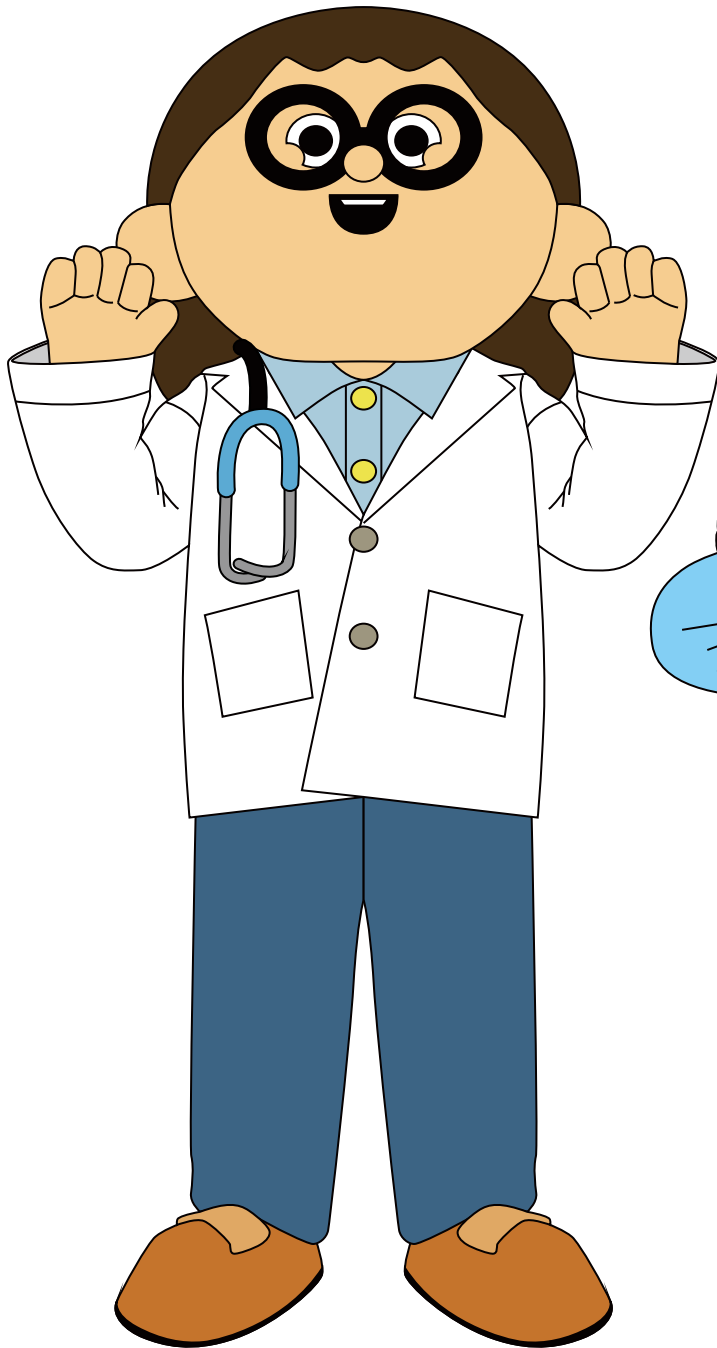


Mascot Costume

Cleaning & Care Instructions



Mascot Costume

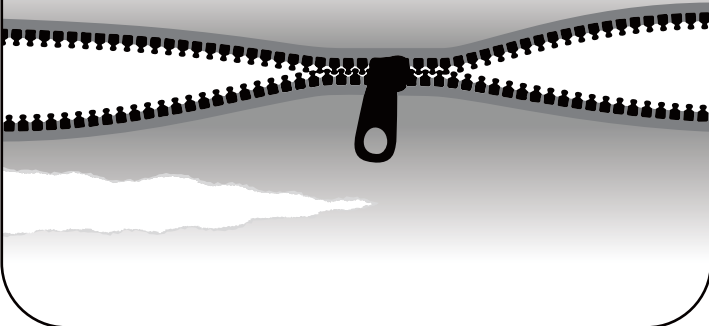
Cleaning & Care Instructions

Proper cleaning and care for your Mascot Costume will increase the overall lifespan of the product. The instructions below are to be used as a guide to help keep your mascot in good shape.

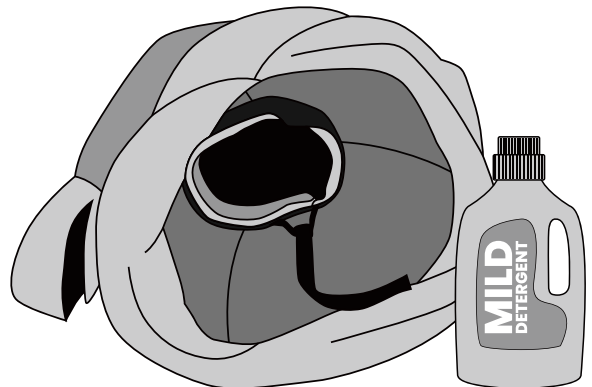
Caring for your Custom Mascot Costume:

- Clean and Inspect after each use, treating any stains as quickly as possible.
- Always allow costumes to fully dry before storing or using them again.
- Never use Bleach or harsh chemicals to clean your costume.
- Never expose to high temperatures (Iron, Dryer, Etc.).

1 Carefully inspect your mascot costume after each use. Look for any broken zippers or damage to the costume itself. If any damage is found, try to get it repaired ASAP as this will increase the life of your costume.



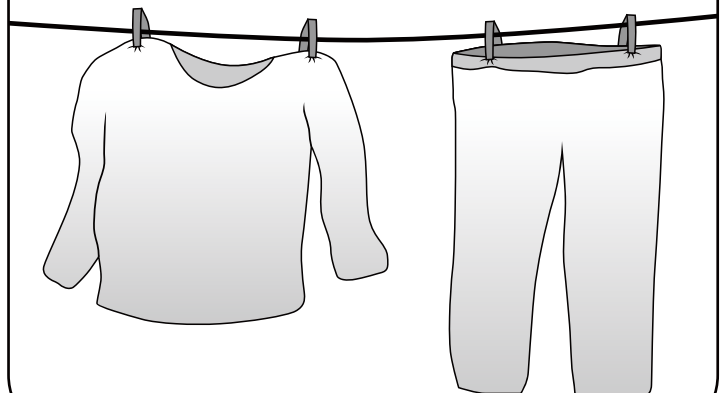
2 Clean the inside of the Mascot head: Using water and mild detergent, wash the head from the inside. **Do not use perfume or deodorizing products.**



3 Remove any stains as quickly as possible using a wet cloth and a stain remover. Please make sure that none of your cleaning agents contain bleach or any other harsh chemicals,



4 Allow the Mascot Costume to Air Dry completely before storing or using it again.



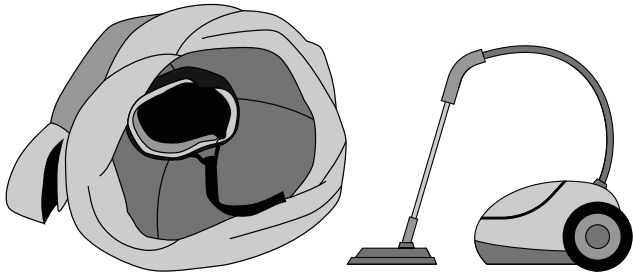
Mascot Costume

Cleaning & Care Instructions

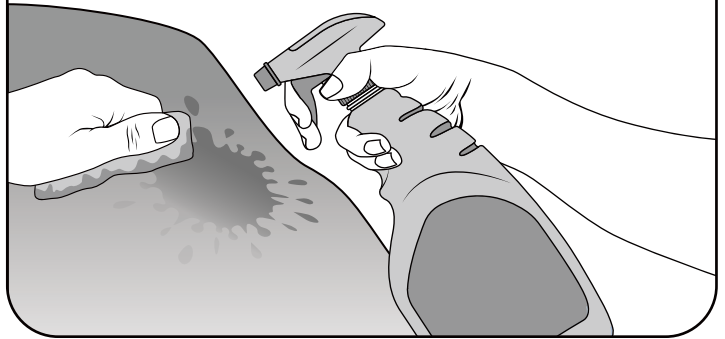
Long-Term Cleaning: The following steps should be used every 3-6 months or after heavy use.

Head & Feet

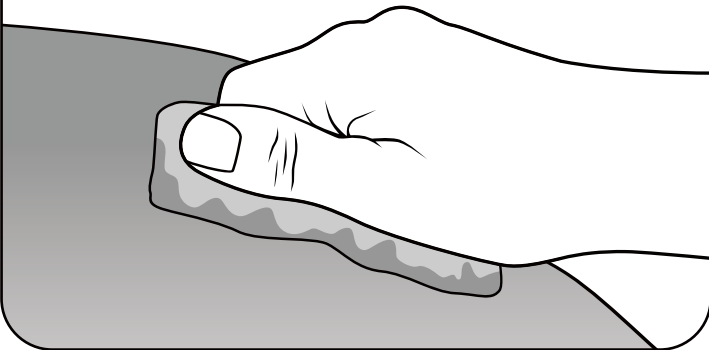
- 1 Clean the head and feet, both from the inside out using a steam cleaner if possible.



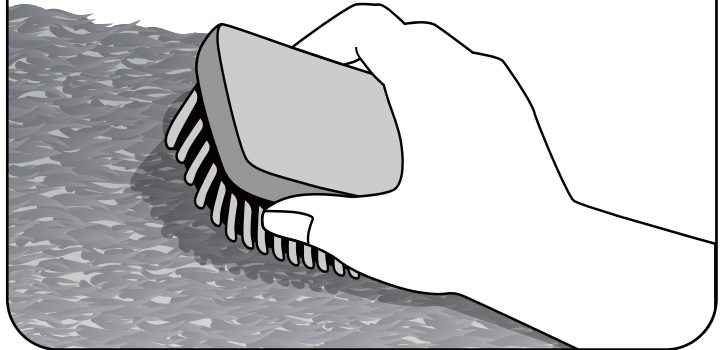
- 2 Remove any stains using a wet cloth and a stain remover (Example: Vanish, Oxi, Action).



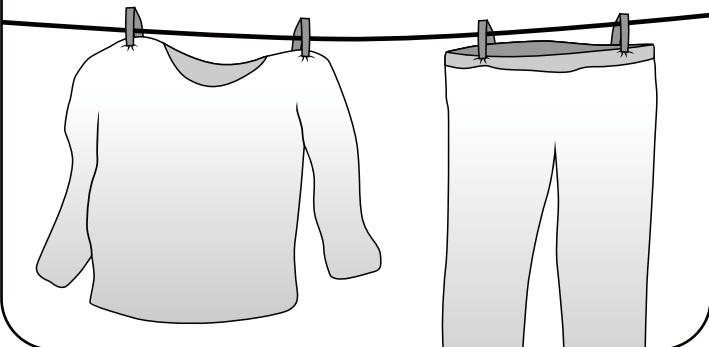
- 3 Wash the head and feet using a wet cloth. Wipe dry with a clean cloth afterward.



- 4 Use a brush to come out any long hair on your mascot costume if applicable.



- 5 Allow the Mascot Costume to Air Dry completely before storing or using it again.



Mascot Costume

Cleaning & Care Instructions

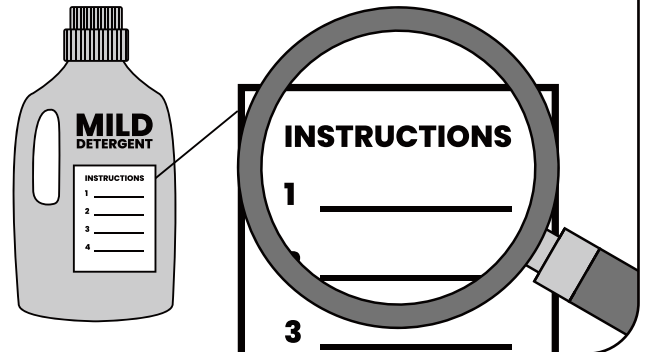
Long-Term Cleaning: The following steps should be used every 3-6 months or after heavy use.

Body, Hands & Clothes

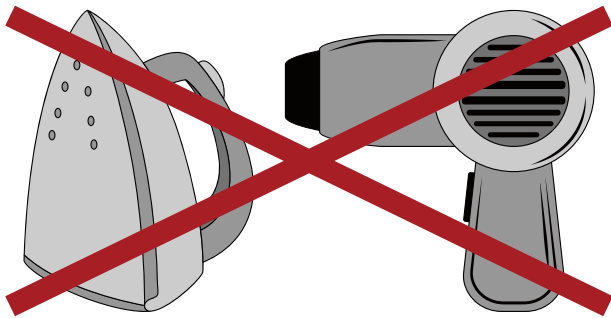
- 1** Take care and wash each of the body parts, hands, and clothing by hand.



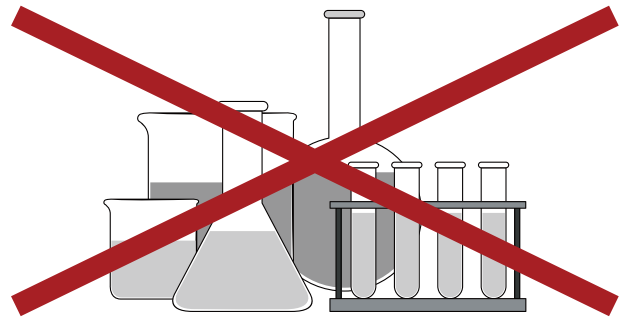
- 2** Carefully review the instructions for the detergent you have chosen to use.



- 3** Avoid the usage of high temperature (Ex: Dryer, Iron, etc.)



- 4** Never use bleach or any harsh chemicals while cleaning your costume.



- 5** For any parts of your costume that cannot be cleaned by hand, please refer to the cleaning instructions noted for the head and feet.

- 6** Allow the Mascot Costume to Air Dry completely before storing or using it again.

